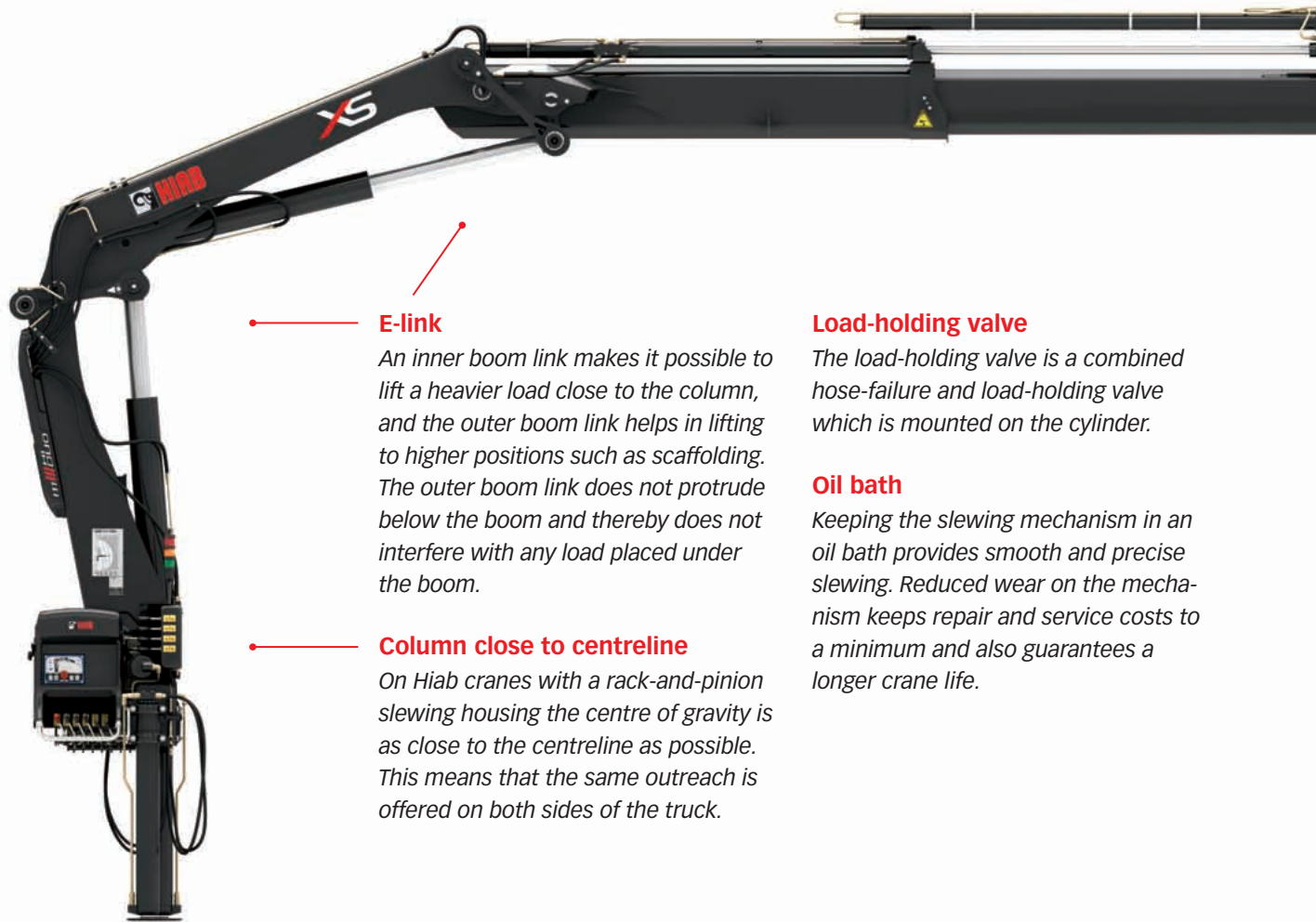


Hiab XS 111

Range 8-11 tm





E-link

An inner boom link makes it possible to lift a heavier load close to the column, and the outer boom link helps in lifting to higher positions such as scaffolding. The outer boom link does not protrude below the boom and thereby does not interfere with any load placed under the boom.

Column close to centreline

On Hiab cranes with a rack-and-pinion slewing housing the centre of gravity is as close to the centreline as possible. This means that the same outreach is offered on both sides of the truck.

Load-holding valve

The load-holding valve is a combined hose-failure and load-holding valve which is mounted on the cylinder.

Oil bath

Keeping the slewing mechanism in an oil bath provides smooth and precise slewing. Reduced wear on the mechanism keeps repair and service costs to a minimum and also guarantees a longer crane life.

Providing solutions for your business

The Hiab XS 111 – a toolbox with reach

The Hiab XS 111 is a very versatile tool in the mid capacity range. This 8-11 tonne-metre workhorse is built to withstand rough tasks such as digging and grapple work, yet it has the feel and control for delivering loads with very high precision. The well proven hexagonal boom profile, high torque slewing system and our intelligent electronics systems will provide you with a crane that always performs its best. The Hiab Valve 80 is the main control valve, and there is a choice of manual or remote controls. The crane can be delivered with the Duo or HiDuo control system.

HiDuo control system

The HiDuo control system is based upon the renowned Hiab Valve 80. HiDuo comes with the SPACE 4000 intelligence system which intelligently monitors and controls the electronic functions of your crane. These functions are focused on assisting the operator in two aspects, safety and productivity. The HiDuo control system support remote controlling with the XSDrive remote control.

SPACE 4000 intelligence system

The SPACE 4000 system intelligently monitors and controls the electronic functions of your crane. These functions are focused on assisting the operator in two aspects, safety and productivity. Safety is managed by an Over Load Protection (OLP) function and productivity is increased by the Automatic Duty Control (ADC) and the Hiab unique Automatic Speed Control (ASC) functions. Further more, the system handles functions primarily used by service personnel such as fault code indication and load cycle data. The SPACE 4000 is a part of the HiDuo control system.



Hexagonal boom profile

The hexagonal profile ensures the boom is always in perfect balance, thanks to its shape and large support surface. The profile also minimizes boom deflection, which reduces maintenance costs and increases efficiency.

Large slide pads

Large slide pads reduce friction and wear keeping, maintenance costs low. Also the Hiab boom system needs no greasing, and thus it is kept cleaner than those of our competitors'.

Attachable tools

A wide range of attachable tools are available for your Hiab crane. These make sure you can carry out a lot of different tasks.



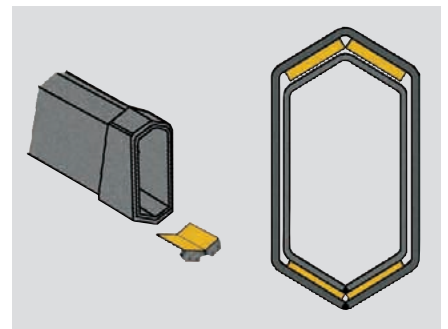
XSDrive

The Hiab XSDrive has been ergonomically developed to relieve you of stress and strain in hands, arms and back. The load indicators provide information for quick and correct actions while work is on-going. There are also a number of accessories that can be added in order to find the ideal control solution for you.



Valve 80

The Hiab Valve 80 is a top-of-the-line open-centre valve based on well-proven technique which gives superb reliability. The valve handles large oil flows and provides great precision and ease of operation.



Large slide pads

The hexagonal profile enables the use of larger slide pads. This makes the extensions move more smoothly and reduces mechanical wear on the boom.

Cargotec improves the efficiency of cargo flows by offering solutions for the loading and unloading of goods on land and at sea – wherever cargo is on the move. Cargotec's main daughter brands for cargo handling Hiab, Kalmar and MacGregor are global market leaders in their fields. www.cargotec.com



Hiab XS 111

Range 8-11 tm

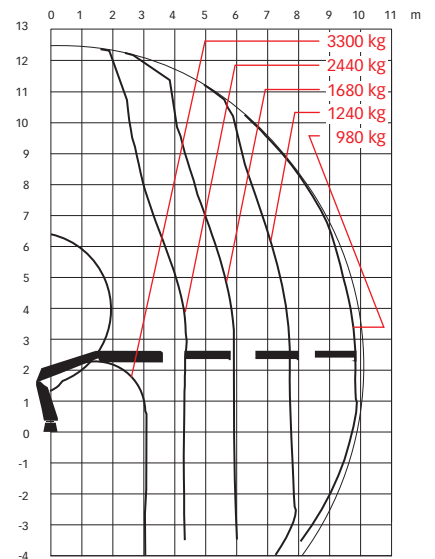
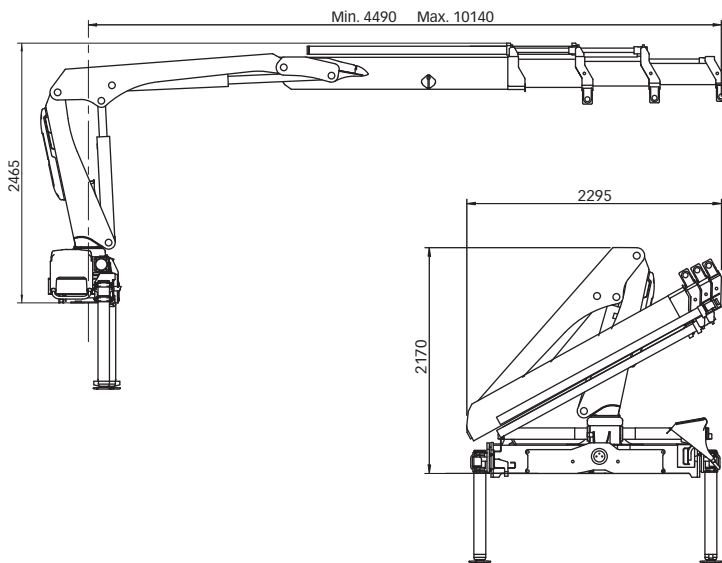


Hiab XS 111 Basic data

Technical data

	B-2 Duo	BS-2 HiDuo	B-3 Duo	B-3 HiDuo	E-3 HiDuo	E-5 HiDuo
Max. lifting capacity (kNm)	97	106	93	93	95	89
Outreach - hydraulic extensions (m)	8.0	7.7	10.1	10.1	10.2	14.6
Outreach - manual extensions (m)	12.1	11.8	12.1	12.1	14.3	16.7
Outreach / Lifting capacity, standard (m / kg)	2.8 / 3550	2.3 / 4650	3.1 / 3150	3.1 / 3300	2.4 / 4350	2.6 / 3800
	4.2 / 2360	3.9 / 2780	4.3 / 2200	4.3 / 2440	4.3 / 2440	4.5 / 2180
	5.9 / 1680	5.5 / 1940	5.9 / 1560	5.9 / 1680	6.1 / 1660	6.3 / 1420
	7.7 / 1260	7.4 / 1440	7.8 / 1140	7.8 / 1240	8.1 / 1200	6.3 / 1420
	-	-	9.8 / 900	9.8 / 980	10.2 / 940	10.4 / 720
	-	-	-	-	-	12.5 / 580
	-	-	-	-	-	14.6 / 480
Slewing angle	406°	406°	406°	406°	406°	406°
Height in folded position (mm)	2170	2170	2170	2170	2170	2170
Width in folded position (mm)	2250	2250	2295	2295	2390	2486
Installation space needed (mm)	695	695	785	785	792	808
Weight - "standard" crane without stabilizers (kg)	1200	1180	1300	1300	1620	1770
Weight - stabilizer equipment (kg)	140 - 285	140 - 285	140 - 285	140 - 285	140 - 285	140 - 285

Hiab XS 111 B-3 HiDuo



Disclaimer. Hiab cranes have been built to meet the highest standards of safety and service life and have been thoroughly tested. Strength calculations for this model have been carried out in accordance with EN13001 in fatigue class S2. Cargotec's certified Quality Assurance System complies with ISO 9001. Some of the items in our literature may be extra equipment. Certain applications may require an official permit. We reserve the right to change technical specifications without prior notice. Hiab cranes produced for EU-countries are CE-marked and comply with the European Standard EN 12999.

Cargotec improves the efficiency of cargo flows by offering solutions for the loading and unloading of goods on land and at sea – wherever cargo is on the move. Cargotec's main daughter brands for cargo handling Hiab, Kalmar and MacGregor are global market leaders in their fields. www.cargotec.com