



CRADLES

ROLLER CRADLES · C-CRADLES



ROLLER CRADLES

Maats produces a program of roller cradles that is proven by its success. Our roller cradles are used in line travel operations. The use of urethane rollers eliminates the risk of damage to the pipe (coating) that can be caused during the regular use of steel wheel cradles. Disassembling the roller cradles is easy and the volume can be reduced to a convenient size for storage and transport. The Maats roller cradles comply with all applicable standards and are supplied with CE certification. Maats roller cradles are available for both sales and rental.

PERFORMANCE

By using multiple urethane rollers the pressure on the pipe is evenly distributed and the risks of damaging the pipe (coating) and 'egging' of the pipe are eliminated. The Maats roller cradles provide the comfort of smooth operation. The urethane rollers ride easily over the weld seams and do not get stuck. The use of high quality materials throughout the design ensures maximum performance.

URETHANE ROLLERS

Our roller cradles are equipped with heavy duty urethane rollers with ball bearings. The urethane wheels do not deform under the weight of the pipe or during storage, as the high mechanical strength of the material easily withstands the stresses it is subjected to. The special damping characteristics of the rollers result in an excellent dynamic load-bearing ability and offer outstanding performance.

SAFE & CERTIFIED

The Maats roller cradles comply with all applicable standards and are supplied with CE certification. The high safety factor in the design and choice for materials (e.g. frame, wire rope, clamps, rollers) ensure safe operation.



HIGHLIGHTS ROLLER CRADLES

PRESSURE ON PIPE EVENLY DISTRIBUTED

RISK OF DAMAGING AND 'EGGING' ELIMINATED

SAFE AND CERTIFIED



**THE MAATS
ROLLER CRADLES
PROVIDE THE
COMFORT OF SMOOTH
OPERATION. THE
URETHANE ROLLERS RIDE
EASILY OVER WELD SEAMS
AND DO NOT GET STUCK**



C-CRADLES

The Maats C-cradle is specially designed for line travel operations with smaller diameter pipe. With the C-cradle, pipes can be easily picked up without the need of extra personnel. Maats C-cradles are available for both sales and rental

EASE OF OPERATION

The C-shape of the cradle provides the ease and comfort of picking up pipes. The use of a C-cradle saves time as the shape of the cradle allows it to be removed from the pipe without the need to disassemble it.

GUIDING WHEELS

By using rubber guiding wheels the pressure on the pipe is evenly distributed and the risks of damaging the pipe (coating) and 'egging' of the pipe are eliminated. The rubber wheels ride easily over weld seams and do not hang up. The use of high quality materials throughout the design ensures maximum performance.

TRANSPORT

There is no need to disassemble or package the cradle for transport. The cradle arrives ready-for-use on the jobsite and is immediately ready for transport after use.

SAFE & CERTIFIED

The Maats C-cradles comply with all applicable standards and are supplied with CE certification. The standard equipped locking pin is an extra safety feature on the C-cradle. The locking pin secures the pipe in the cradle, preventing the pipe from dropping. The locking pin is easy and quick to use during operation.



HIGHLIGHTS C-CRADLES

SPECIALLY DESIGNED FOR LINE TRAVEL

EASE AND COMFORT OF PICKING UP PIPES

REMOVE WITHOUT DISASSEMBLE

ARRIVES READY-FOR-USE ON THE JOBSITE

LOCKING PIN FOR EXTRA SAFETY



BASIC EQUIPMENT

ROLLER CRADLES



SIZES / CAPACITIES

TYPE ROLLER CRADLE	MINIMUM OUTSIDE PIPE DIAMETER MM / INCH	MAXIMUM OUTSIDE PIPE DIAMETER MM / INCH	MAXIMUM LIFTING CAPACITY KG / LB
RC 06-14	160 / 6.30	365 / 14.37	14.000 / 30,865
RC 12-24	320 / 12.60	620 / 42.41	25.000 / 55,116
RC 24-36	605 / 23.82	925 / 36.42	40.000 / 88,185
RC 36-48	910 / 35.83	1235 / 48.62	45.000 / 99,208
RC 48-60	1215 / 47.84	1550 / 61.02	48.000 / 121,254
RC 56-68	1520 / 59.84	1750 / 68.90	48.000 / 121,254



FRAME

Material	Steel
Coating	2 component epoxy primer 2 component PU top coat
Color	Grey, RAL 7016
Strings	2
Tested	In accordance with the EKH Code of practice
Wire rope spreaders	4



WIRE ROPE

Number of strands	6
Number of wires	36
Core	Steel
Surface finishing	Galvanized



ROLLERS

Rollers	20	for RC 06-14
	28	for RC 12-24
	24	for RC 24-36
	32	for RC 36-48
	36	for RC 48-60
	40	for RC 56-68
Center	Welded steel (RC 12-24) or cast iron (others)	
Bearings	Ball	
Covering	PU	
Shore hardness A (DIN 53505)	92	
Compression set (DIN 53517)	12% (70 hours at 23° C) 20% (24 hours at 70° C)	



WIRE ROPE CLAMPS

Saddle	Forged steel
Bolts	Integral part of the saddle
Nuts	Standard heavy hexagonal
Surface finishing	Galvanized
Minimum requirements	ASME B30.26



SPRINGS

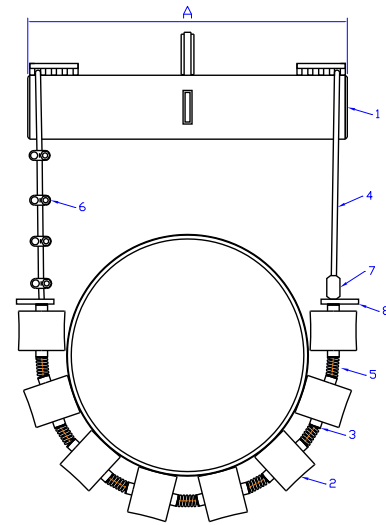
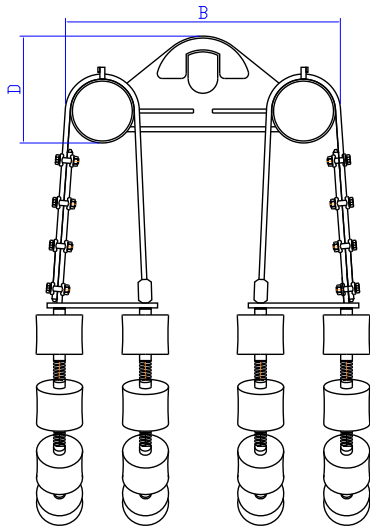
Springs	Compression type
Pitch	Constant
Ends	Closed and ground
Standard	DIN EN 10270 SH (C DIN 17223 / 1 - 1.1200)

Rollers are (92 shore A) heavy duty rollers with ball bearings. The elastic covering on wheels subjected to extreme stresses must have very high mechanical and dynamic properties indeed. If, for example, steering movements are to be performed while the vehicle is stationary, high-tensile materials will be needed that do not show any permanent deformation. PU wheel coverings are ideal under such circumstances because, on the one hand, they have high mechanical strength and, on the other, outstandingly low abrasion values and extremely low permanent deformation. High dynamic loads - whether caused by high deformation at low speeds or by low deformation at high speeds - lead to a build-up of heat in the elastomer covering, as a result of which the load-bearing ability is impaired. Through the special damping characteristics of elastomers, the heat build-up is kept low. Because the temperature also has little effect on the mechanical properties, this results in outstanding dynamic load-bearing ability. Long standing-still times can lead to a flattening-out effect that significantly impairs the rolling behavior of the solid tires. The elastic wheel coverings have an extremely low permanent deformation, which means that the wheels function perfectly even after prolonged periods without movement. The excellent dynamic load-bearing ability and superior property profile mean that the wheel coverings of the Maats Roller Cradles offer outstanding performance.



DIMENSIONS AND WEIGHTS

ROLLER CRADLES



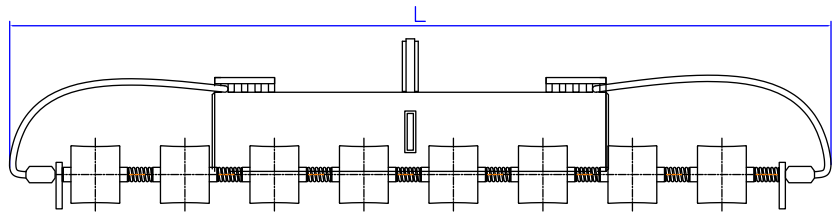
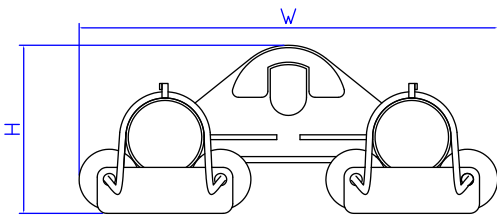
DIMENSIONS



PARTS

TYPE ROLLER CRADLES	FRAME LENGTH (A) MM / INCH	FRAME WIDTH (B) MM / INCH	FRAME HEIGHT (D) MM / INCH
RC 06-14	746 / 29.37	1.112 / 43.78	650 / 25.59
RC 12-24	905 / 35.63	1.070 / 42.12	530 / 20.87
RC 24-36	1.270 / 50.00	1.215 / 47.84	480 / 18.90
RC 36-48	1.270 / 50.00	1.340 / 52.76	540 / 21.26
RC 48-60	1.904 / 74.96	1.370 / 53.94	546 / 21.50
RC 56-68	2.114 / 83.23	1.370 / 53.94	570 / 22.44

1 Frame	5 Spring
2 Roller	6 Wire rope clamp
3 Washer DIN 125A	7 Clamp
4 Wire rope	8 Wire rope spreader



TRANSPORT DIMENSIONS



WEIGHT

TYPE ROLLER CRADLES	LENGTH (L) MM / INCH	WIDTH (W) MM / INCH	HEIGHT (H) MM / INCH
RC 06-14	1200 / 47.24	1200 / 47.24	850 / 33.47
RC 12-24	1.800 / 70.87	1.200 / 47.24	650 / 25.59
RC 24-36	2.400 / 94.49	1.600 / 62.99	800 / 31.50
RC 36-48	3.350 / 131.89	1.700 / 66.93	700 / 27.56
RC 48-60	3.750 / 147.64	1.730 / 68.11	800 / 31.50
RC 56-68	4.100 / 161.42	1.730 / 68.11	850 / 33.47

WEIGHT KG / LB
385 / 849
375 / 827
1.400 / 3,086
1.900 / 4,189
2.100 / 4,630
2.300 / 5,071

EQUIPMENT

ROLLER CRADLES



FRAME

- High strength steel fram •
- 2 layer epoxy / PU coating •
- Special coatings (seawater resistant etc.) +
- Color grey RAL 7016 high gloss •
- Special (company) colours +



WIRE ROPE

- Construction 6x36WS+Stc •
- Surface galvanized •
- Length to fit max. pipe size •
- Special (longer) length +



DOCUMENTATION

- Certificate for frame •
- Certificate of wire ropes •
- CE certificate •
- Instruction manual •
- Safety instructions •



ROLLERS

- Ball bearings •
- Covering PU •
- Special rollers +



• = standard
+ = option

Options and/or special attachments, supplied by vendors other than Maats, are only to be installed with the knowledge and approval of Maats to retain warranty.

BASIC EQUIPMENT

C-CRADLES

SIZES / CAPACITIES

TYPE C-CRADLES	MINIMUM OUTSIDE PIPE DIAMETER	MAXIMUM OUTSIDE PIPE DIAMETER	MAXIMUM LIFTING CAPACITY
C 02-12	51 mm / 2.00 in	324 mm / 12.75 in	3.200 kg / 7.055 lb

PARTS

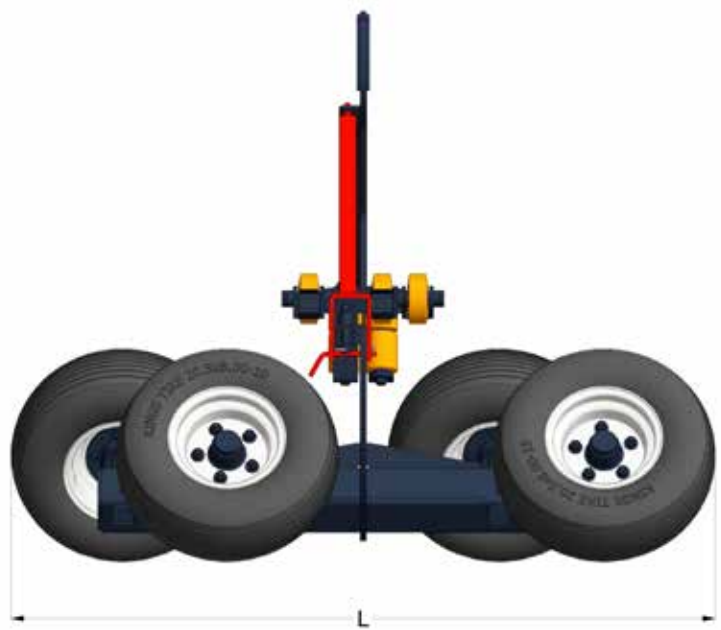
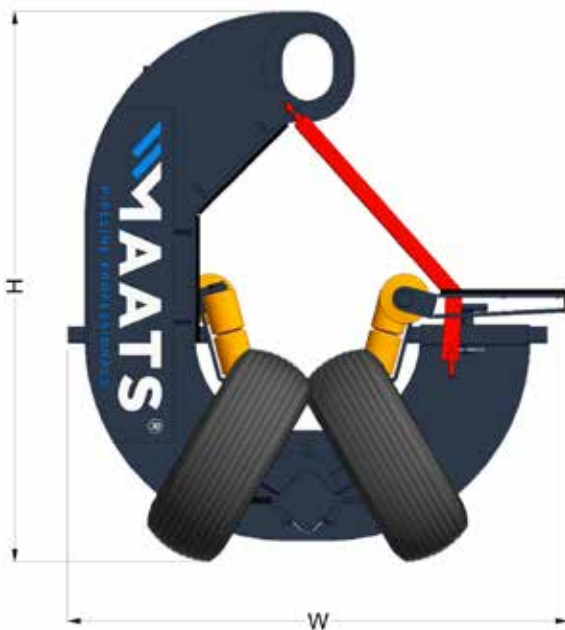
- 1 Rubber tire
- 2 Main frame
- 3 Roller brackets locking pin
- 4 Double roller bracket
- 5 Single roller bracket
- 6 Safety latch
- 7 Protection strip
- 8 Countersunk screw
- 9 Retaining clip



DIMENSIONS

TYPE C - CRADLES	LENGTH (L) MM / INCH	WIDTH (W) MM / INCH	HEIGHT (H) MM / INCH	WEIGHT KG / LB
C 02-12	1.682 / 66.22	1.196 / 47.08	1.314 / 51.73	278 / 613

WEIGHT



Options and/or special attachments, supplied by vendors other than Maats, are only to be installed with the knowledge and approval of Maats to retain warranty.



MAATS PIPELINE PROFESSIONALS

Maats manufactures, sells and rents out high quality equipment for the construction of pipelines with all common diameters from 6 up to 60 inches. With branch offices in Indonesia (PT. Maats), partnerships in Algeria (Maats Afrique) and Turkey (Maats Insaat) and a close cooperation with the global network of Liebherr companies, Maats' presence is truly global.

THE NETHERLANDS HEAD OFFICE

Breukersweg 4
7471 ST Goor
the Netherlands
P.O.Box 165
7470 AD Goor
the Netherlands
T: +31 (0)547 260 000
F: +31 (0)547 261 000
E: info@maats.com

INDONESIA SUBSIDIARY OFFICE

Talavera Office Suite
18th floor
JL. T.B. Simatupang
Kav. 22-26
12430 Jakarta
Indonesia
T: +62 (0)212 971 5936
E: info@maats.com

INDONESIA SUBSIDIARY WORKSHOP

Kawasan Industri Sekupang
Makmur
Abadi E4 No. 1
JL. R.E. Martadinata
Tanjung Pinggir, Sekupang
29428 Batam
Indonesia
T: +62 (0)778 326 526
F: +62 (0)778 326 576
E: info@maats.com



**STRENGTH,
PERFORMANCE
& RELIABILITY
UNDER ALL
CIRCUMSTANCES.
READY FOR
FUTURE CHALLENGES**

MAATS[®].COM